



*d'Amico*



**Fleet Overview**  
*OHBS Fleet Summary*



Vessel Name	Vessel Class	Built/Delivery	DWT MT	Draft M	LOA M	Beam M	Cubic (Bale) CUFT	Cubic (Grain) CUFT	Ho/Ha	Cranes MT	Grabs CBM
<i>Cielo di Amalfi</i>	<i>Saiki</i>	2007	37,300	10.87	177.9	28.6	1,600,000	1,623,000	5/5	4x30.5	-
<i>Cielo di Venezia</i>	<i>Saiki</i>	2007	37,300	10.87	177.9	28.6	1,600,000	1,623,000	5/5	4x30.5	-
<i>Cielo di Tokyo</i>	<i>Saiki</i>	2008	37,300	10.87	177.9	28.6	1,600,000	1,623,000	5/5	4x30.5	-
<i>Cielo di Pisa</i>	<i>Kanda</i>	2008	32,248	10.02	177.1	28.4	1,452,000	1,504,000	5/5	4x30.5	-
<i>Cielo di Dublino</i>	<i>HMD (Non-benched)</i>	2011	37,000	10.92	182.8	27.9	1,595,000	1,633,000	5/5	4x35	-
<i>Cielo di San Francisco</i>	<i>HMD (Non-benched)</i>	2011	37,000	10.92	182.8	27.9	1,595,000	1,633,000	5/5	4x35	-
<i>Cielo di Capalbio</i>	<i>HMD (Benched)</i>	2012	36,600	10.92	182.8	27.9	1,513,000	1,560,000	5/5	4x35	4x10
<i>Cielo di Vaiano</i>	<i>HMD (Benched)</i>	2012	36,600	10.92	182.8	27.9	1,513,000	1,560,000	5/5	4x35	4x10
<i>Cielo di Palermo</i>	<i>Saiki</i>	2013	37,300	10.87	177.9	28.6	1,600,000	1,623,000	5/5	4x30.5	-
<i>Cielo di Monaco</i>	<i>Yangfan</i>	2014	39,200	10.50	180.0	30.0	1,707,700	1,781,000	5/5	4x36	4x10
<i>Cielo di Tocopilla</i>	<i>Yangfan</i>	2014	39,200	10.50	180.0	30.0	1,707,700	1,781,000	5/5	4x36	4x10
<i>Lentikia</i>	<i>Yangfan</i>	2015	39,200	10.50	180.0	30.0	1,707,700	1,781,000	5/5	4x36	4x10
<i>Cielo di Virgin Gorda</i>	<i>Yangfan</i>	2015	39,200	10.50	180.0	30.0	1,707,700	1,781,000	5/5	4x36	4x10
<i>Cielo di Valparaiso</i>	<i>Yangfan</i>	2015	39,200	10.50	180.0	30.0	1,707,700	1,781,000	5/5	4x36	4x10
<i>Cielo di Cartagena</i>	<i>Yangfan</i>	2015	39,200	10.50	180.0	30.0	1,707,700	1,781,000	5/5	4x36	4x10
<i>Cielo di Angra</i>	<i>Yangfan</i>	2015	39,200	10.50	180.0	30.0	1,707,700	1,781,000	5/5	4x36	4x10
<i>Cielo di Tampa</i>	<i>Yangfan</i>	2016	39,200	10.50	180.0	30.0	1,707,700	1,781,000	5/5	4x36	4x10
<i>Cielo di Jari</i>	<i>Yangfan</i>	2016	39,200	10.50	180.0	30.0	1,707,700	1,781,000	5/5	4x36	4x10
<i>Cielo di Mizushima</i>	<i>Emerald 39</i>	2016	39,400	10.62	179.9	30.0	1,660,000	1,700,000	5/5	4x30.5	-
<i>Cielo di Iyo</i>	<i>Minami Nippon</i>	2017	37,000	10.35	183.0	29.5	1,660,000	1,695,000	5/5	4x30.5	-
<i>Cielo di Seto</i>	<i>Minami Nippon</i>	2017	37,000	10.35	183.0	29.5	1,660,000	1,695,000	5/5	4x30.5	-



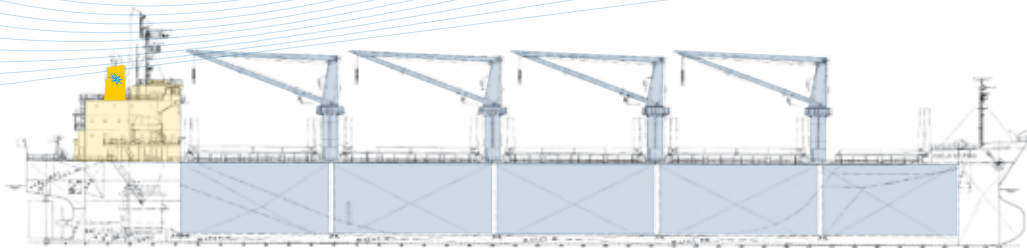
*d'Amico*



**Fleet Overview**  
Kanda Built

## Vessels

**Cielo di Pisa (2008)**



## Vessel Particulars

**A60 Bulkhead  
Co2 Fitted  
Mechanical Ventilation**

<b>Year of Built</b>	<b>2008</b>
<b>Deadweight</b>	<b>32,250 MT</b>
<b>LOA</b>	<b>177.10 M</b>
<b>Beam</b>	<b>28.40 M</b>
<b>Draft</b>	<b>10.02 M</b>

<b>Holds/Hatches</b>	<b>5/5</b>
<b>Cranes</b>	<b>4x30.5 MT SWL Max Outreach 26.0 M</b>
<b>Tanktop Strength</b>	<b>Hold 1 - 14.4 MT/SQM Holds 2,3,4,5 - 14.8 MT/SQM</b>

## Holds Dimension (LxBxH)

<b>1/ 24.00x6.40-24.00x14.20 M</b>
<b>2/ 28.00x24.00x14.20 M</b>
<b>3/ 28.00x24.00x14.20 M</b>

<b>4/ 28.00x24.00x14.20 M</b>
<b>5/ 26.20x24.00-9.60x14.20 M</b>

## Holds Cubic Capacity

	<b>GRAIN/BALE (CUFT)</b>	<b>GRAIN/BALE (CUM)</b>
<b>1/</b>	<b>204,541/198,044</b>	<b>5,792/5,608</b>
<b>2/</b>	<b>335,488/323,022</b>	<b>9,500/9,147</b>
<b>3/</b>	<b>335,488/323,022</b>	<b>9,500/9,147</b>
<b>4/</b>	<b>335,488/323,022</b>	<b>9,500/9,147</b>
<b>5/</b>	<b>293,216/285,164</b>	<b>8,303/8,075</b>
<b>TOTAL/</b>	<b>1,504,220/1,452,272</b>	<b>42,595/41,224</b>



*d'Amico*

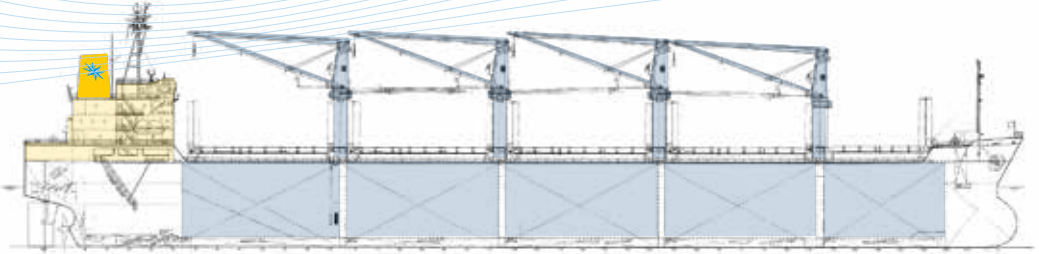


**Fleet Overview**  
*Saiki Built*

## Vessels

**Cielo di Amalfi** (2007)  
**Cielo di Venezia** (2007)

**Cielo di Tokyo** (2008)  
**Cielo di Palermo** (2013)



## Vessel Particulars

**A60 Bulkhead**  
**Co2 Fitted**  
**Mechanical Ventilation**

<b>Year of Built</b>	2007-2013
<b>Deadweight</b>	37,300 MT
<b>LOA</b>	177.85 M
<b>Beam</b>	28.60 M
<b>Draft</b>	10.87 M

<b>Holds/Hatches</b>	5/5
<b>Cranes</b>	4x30.5 MT SWL Max Outreach 28.0 M
<b>Tanktop Strength</b>	22.00 MT/SQM

## Holds Dimension (LxBxH)

<b>1/</b>	21.60x13.70-20.00x15.00 M
<b>2/</b>	27.20x24.00x15.00 M
<b>3/</b>	27.20x24.00x15.00 M

<b>4/</b>	27.20x24.00x15.00 M
<b>5/</b>	28.00x24.00-10.40x15.00 M

## Holds Cubic Capacity

	GRAIN/BALE (CUFT)
<b>1/</b>	226,240/222,652
<b>2/</b>	350,820/345,411
<b>3/</b>	351,587/346,095
<b>4/</b>	351,587/346,941
<b>5/</b>	342,274/337,996
<b>TOTAL/</b>	1,622,508/1,599,065

	GRAIN/BALE (CUM)
<b>1/</b>	6,406/6,305
<b>2/</b>	9,934/9,781
<b>3/</b>	9,956/9,800
<b>4/</b>	9,956/9,824
<b>5/</b>	9,692/9,570
<b>TOTAL/</b>	45,944/45,280



*d'Amico*



**Fleet Overview**  
*HMD Built (Benched)*

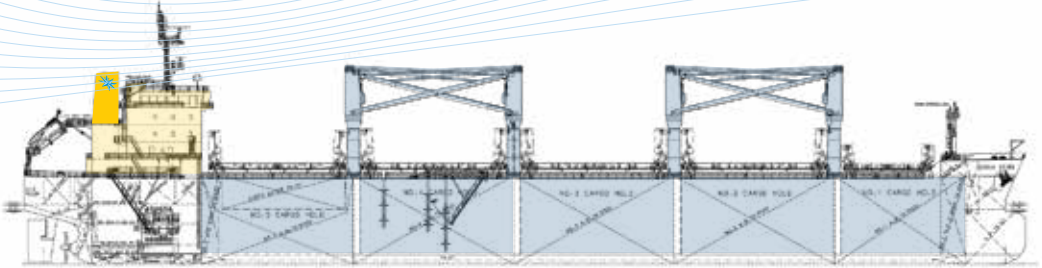
# Fleet Overview

## HMD Built (Benched)



### Vessels

**Cielo di Capalbio** (2012)  
**Cielo di Vaiano** (2012)



### Vessel Particulars

Year of Built	2012
Deadweight	36,600 MT
LOA	182.83 M
Beam	27.86 M
Draft	10.92 M

A60 Bulkhead  
Co2 Fitted  
Mechanical Ventilation

Dehumidifier

Holds/Hatches	5/5
Cranes	4x35 MT SWL Max Outreach 28.0 M
Grabs	4x10 CBM Mechanical
Tanktop Strength	Holds 1,3,5 - 21.8 MT/SQM Holds 2,4 - 15.9 MT/SQM

### Holds Dimension (LxBxH)

1/ 18.3x12.4-17.4x15.6 M

2/ 28.1x23.3x15.6 M

3/ 28.1x23.3x15.6 M

4/ 28.1x23.3x15.6 M

5/ 24.7x23.3-17.40x15.6 M

### Holds Cubic Capacity

	GRAIN/BALE (CUFT)	GRAIN/BALE (CUM)
1/	198,960/190,205	5,634/5,386
2/	356,147/345,837	10,085/9,793
3/	356,147/345,837	10,085/9,793
4/	356,147/345,837	10,085/9,793
5/	292,611/285,237	8,286/8,077
TOTAL/	1,560,012/1,512,953	44,175/42,842





*d'Amico*



**Fleet Overview**  
*HMD Built (Non-benched)*

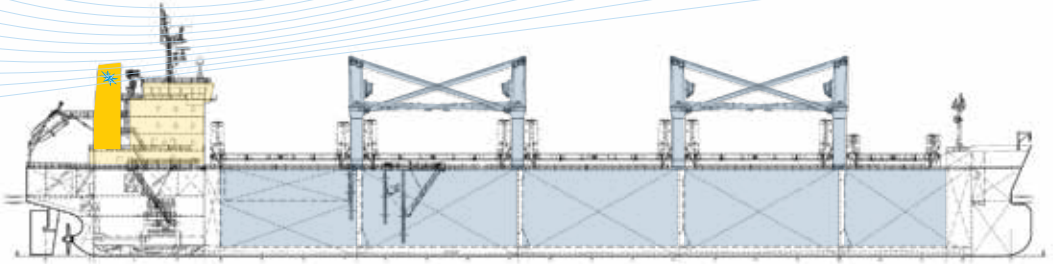
# Fleet Overview

## HMD Built (Non-benched)



### Vessels

*Cielo di Dublino* (2011)  
*Cielo di San Francisco* (2011)



### Vessel Particulars

	A60 Bulkhead Co2 Fitted Mechanical Ventilation	Dehumidifier
Year of Built	2011	Holds/Hatches 5/5
Deadweight	37,000 MT	Cranes 4x35 MT SWL
LOA	182.23 M	Max Outreach 28.0 M
Beam	27.85 M	Tanktop Strength Holds 1,3,5 - 21 MT/SQM
Draft	10.92 M	Holds 2,4 - 15.9 MT/SQM

### Holds Dimension (LxBxH)

1/ 17.25x9.90-23.30x15.60 M	4/ 27.00x23.30x15.60 M
2/ 27.00x23.30x15.60 M	5/ 24.77x23.30-11.60x15.60 M
3/ 27.00x23.30x15.60 M	

### Holds Cubic Capacity

	GRAIN/BALE (CUFT)	GRAIN/BALE (CUM)
1/	214,395/209,430	6,071/5,930
2/	369,363/359,665	10,459/10,185
3/	369,635/359,665	10,467/10,185
4/	369,635/359,665	10,467/10,185
5/	309,593/306,121	8,767/8,668
TOTAL/	1,632,597/1,594,549	46,231/45,153



*d'Amico*



**Fleet Overview**

*Yangfan Built*

# Fleet Overview

# Yangfan Built

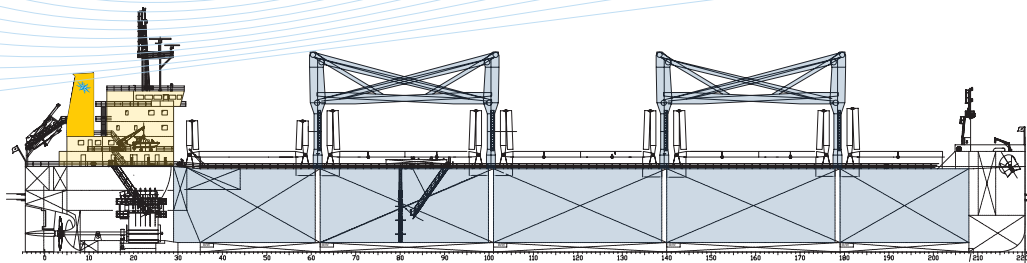


## Vessels

*Cielo di Monaco* (2014)  
*Cielo di Tocopilla* (2014)  
*Cielo di Virgin Gorda* (2015)

*Lentikia* (2015)  
*Cielo di Valparaiso* (2015)  
*Cielo di Cartagena* (2015)

*Cielo di Angra* (2015)  
*Cielo di Tampa* (2016)  
*Cielo di Jari* (2016)



## Vessel Particulars

**A60 Bulkhead**  
**Co2 Fitted**  
**Mechanical Ventilation**

<b>Year of Built</b>	2014-2017
<b>Deadweight</b>	39,200 MT
<b>LOA</b>	179.99 M
<b>Beam</b>	30.0 M
<b>Draft</b>	10.50 M

<b>Holds/Hatches</b>	5/5
<b>Cranes</b>	4x36 MT SWL Max Outreach 30.0 M
<b>Grabs</b>	4x10 CBM Mechanical
<b>Tanktop Strength</b>	Holds 1,3,5 - 21 MT/SQM Holds 2,4 - 15.1 MT/SQM

## Holds Dimension (LxBxH)

1/ 23.20x11.06-20.80x15.40 M
2/ 30.30x25.40x15.40 M
3/ 30.30x25.40x15.40 M

4/ 30.30x25.40x15.40 M
5/ 20.80x25.40-11.43x15.40 M

## Holds Cubic Capacity

	GRAIN/BALE (CUFT)
1/	248,275/235,159
2/	417,011/396,614
3/	416,125/396,614
4/	416,125/396,614
5/	296,056/282,742
<b>TOTAL/</b>	<b>1,793,592/1,707,743</b>

	GRAIN/BALE (CUM)
1/	7,030.4/6,659
2/	11,808.5/11,231
3/	11,783.4/11,231
4/	11,783.4/11,231
5/	8,383.4/8,006
<b>TOTAL/</b>	<b>50,789.1/48,358</b>



*d'Amico*



**Fleet Overview**  
*Minami Nippon Built*

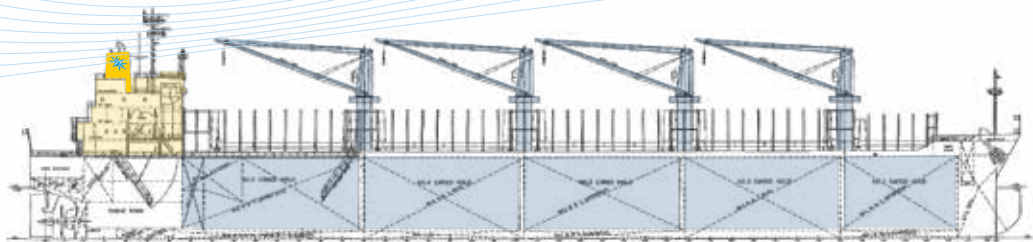
# Fleet Overview

## Minami Nippon Built



### Vessels

**Cielo di Iyo** (2017)  
**Cielo di Seto** (2017)



### Vessel Particulars

**A60 Bulkhead Equivalent**  
**Co2 Fitted**  
**Mechanical Ventilation**

<b>Year of Built</b>	<b>2017</b>
<b>Deadweight</b>	<b>37,100 MT</b>
<b>LOA</b>	<b>183.0 M</b>
<b>Beam</b>	<b>29.5 M</b>
<b>Draft</b>	<b>10.35 M</b>

<b>Holds/Hatches</b>	<b>5/5</b>
<b>Cranes</b>	<b>4x30.5 MT SWL</b> <b>Max Outreach 26.0 M</b>
<b>Tanktop Strength</b>	<b>21.0 MT/SQM</b>

### Holds Dimension (LxBxH)

<b>1/ 8.00-12.80x9.60-17.00x15.60 M</b>
<b>2/ 29.60x25.00x15.40 M</b>
<b>3/ 29.60x25.00x15.40 M</b>

<b>4/ 29.60x25.00x15.40 M</b>
<b>5/ 29.60x25.00x15.40 M</b>

### Holds Cubic Capacity

	<b>GRAIN/BALE (CUFT)</b>	<b>GRAIN/BALE (CUM)</b>
<b>1/</b>	<b>169,159/165,239</b>	<b>4,790/4,677</b>
<b>2/</b>	<b>385,393/376,988</b>	<b>10,913/10,675</b>
<b>3/</b>	<b>386,629/377,129</b>	<b>10,948/10,679</b>
<b>4/</b>	<b>386,629/377,129</b>	<b>10,948/10,679</b>
<b>5/</b>	<b>366,040/358,023</b>	<b>10,365/10,138</b>
<b>TOTAL/</b>	<b>1,693,850/1,654,438</b>	<b>47,964/46,848</b>



*d'Amico*



**Fleet Overview**  
**Emerald 39**

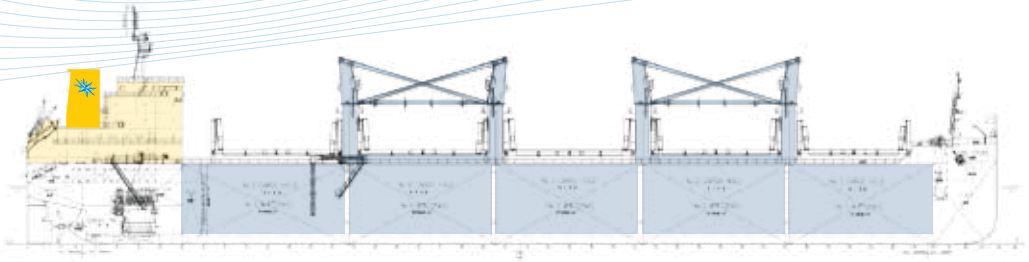
# Fleet Overview

# Emerald 39



## Vessels

**Cielo di Mizushima (2016)**



## Vessel Particulars

**A60 Bulkhead Equivalent  
Co2 Fitted  
Mechanical Ventilation**

<b>Year of Built</b>	<b>2016</b>
<b>Deadweight</b>	<b>39,400 MT</b>
<b>LOA</b>	<b>179.9 M</b>
<b>Beam</b>	<b>30.0 M</b>
<b>Draft</b>	<b>10.618 M</b>

<b>Holds/Hatches</b>	<b>5/5</b>
<b>Cranes</b>	<b>4x30.5 MT SWL Max Outreach 30.0 M</b>
<b>Tanktop Strength</b>	<b>25.0 MT/SQM</b>

## Holds Dimension (LxBxH)

<b>1/ 27.60x15.72-25.26x15.35 M</b>	<b>4/ 28.00x25.26x15.35 M</b>
<b>2/ 28.00x25.26x15.35 M</b>	<b>5/ 26.40x25.26x15.35 M</b>
<b>3/ 28.00x25.26x15.35 M</b>	

## Holds Cubic Capacity

	<b>GRAIN/BALE (CUFT)</b>	<b>GRAIN/BALE (CUM)</b>
<b>1/</b>	<b>302,076/293,013</b>	<b>8,553.83/8,297.2</b>
<b>2/</b>	<b>355,569/348,457</b>	<b>10,068.6/9,867.2</b>
<b>3/</b>	<b>355,569/348,457</b>	<b>10,068.6/9,867.2</b>
<b>4/</b>	<b>355,569/348,457</b>	<b>10,068.6/9,867.2</b>
<b>5/</b>	<b>331,511/321,565</b>	<b>9,387.34/9,105.7</b>
<b>TOTAL/</b>	<b>1,700,295/1,659,948</b>	<b>48,147.0/47,004.5</b>